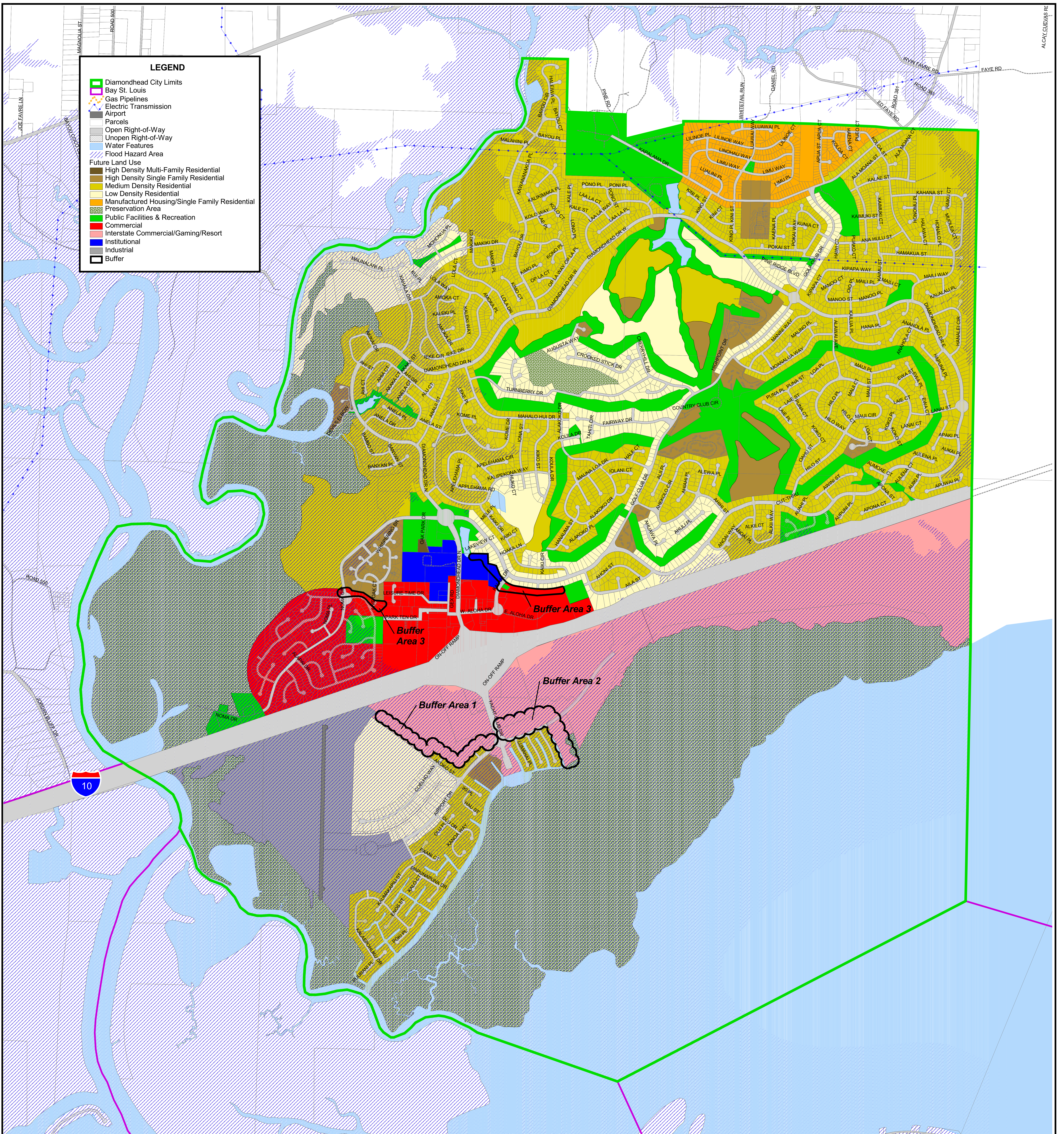


LEGEND

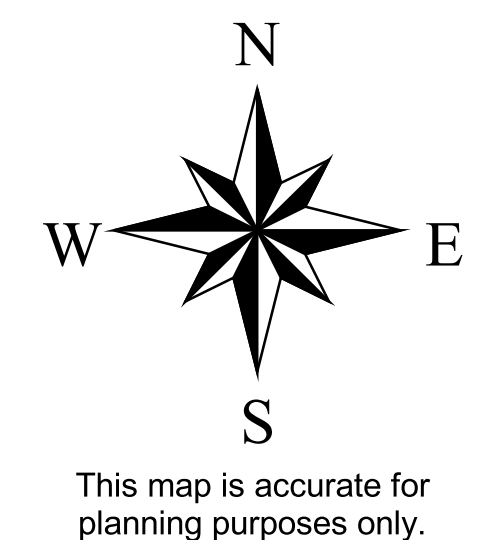
- Diamondhead City Limits
- Bay St. Louis
- Gas Pipelines
- Electric Transmission
- Airport
- Parcels
- Open Right-of-Way
- Unopen Right-of-Way
- Water Features
- Flood Hazard Area
- Future Land Use**
- High Density Multi-Family Residential
- High Density Single Family Residential
- Medium Density Residential
- Low Density Residential
- Manufactured Housing/Single Family Residential
- Preservation Area
- Public Facilities & Recreation
- Commercial
- Interstate Commercial/Gaming/Resort
- Institutional
- Industrial
- Buffer



BRIDGE & WATSON, INC.
 URBAN AND REGIONAL PLANNING CONSULTANTS AND LAND PLANNERS
 608 McCLARY ROAD
 POST OFFICE BOX 1482
 OXFORD, MS 38655
 TEL: (662) 234-0958
 FAX: (662) 234-0997
 MAILBOX@PLANNING-CONSULTANTS.COM

Future Land Use Diamondhead, Mississippi

Adopted by the Mayor and City Council Thursday, September 13, 2012



Data Sources:
 Hancock County GIS Dept.;
 US Fish and Wild Life Service;
 FEMA DFIRM data published Oct 16, 2009

August 6, 2012