An aerial photograph of a development site with various colored overlays and labels. The site includes residential areas (yellow), townhomes (orange), mixed-use areas (blue), commercial parking (green), office warehouse (purple), and stormwater ponds (light blue). Labels include 'EXISTING NOMA DRIVE CIRCLE', 'TOWNHOMES', 'PROPOSED CONNECTION', 'D.W.S.D.', 'MIXED USE', 'HOTEL', 'COMMERCIAL PARKING BELOW', 'OFFICE WAREHOUSE', 'STORMWATER 1.9 AC', 'STORMWATER 1.2 AC', 'FLOOD ZONE', 'EXISTING FORCE MAIN', 'AIRPORT RESTRICTIONS', 'PROPOSED MDOT ROUNDABOUT', 'EXISTING COMMERCIAL', 'PROPOSED L. CONNECTION', 'RESIDENTIAL', 'TOWNHOMES (ELEVATED)', 'STORMWATER 2.2 AC', 'STORMWATER 1.0 AC', 'EXISTING NOMA DRIVE CIRCLE', 'PROPOSED CONNECTION', 'D.W.S.D.', 'MIXED USE', 'HOTEL', 'COMMERCIAL PARKING BELOW', 'OFFICE WAREHOUSE', 'STORMWATER 1.9 AC', 'STORMWATER 1.2 AC', 'FLOOD ZONE', 'EXISTING FORCE MAIN', 'AIRPORT RESTRICTIONS', 'PROPOSED MDOT ROUNDABOUT', 'EXISTING COMMERCIAL', 'PROPOSED L. CONNECTION', 'RESIDENTIAL', 'TOWNHOMES (ELEVATED)', 'STORMWATER 2.2 AC', 'STORMWATER 1.0 AC'.

DIAMONDHEAD MASTERPLAN

Presented by:

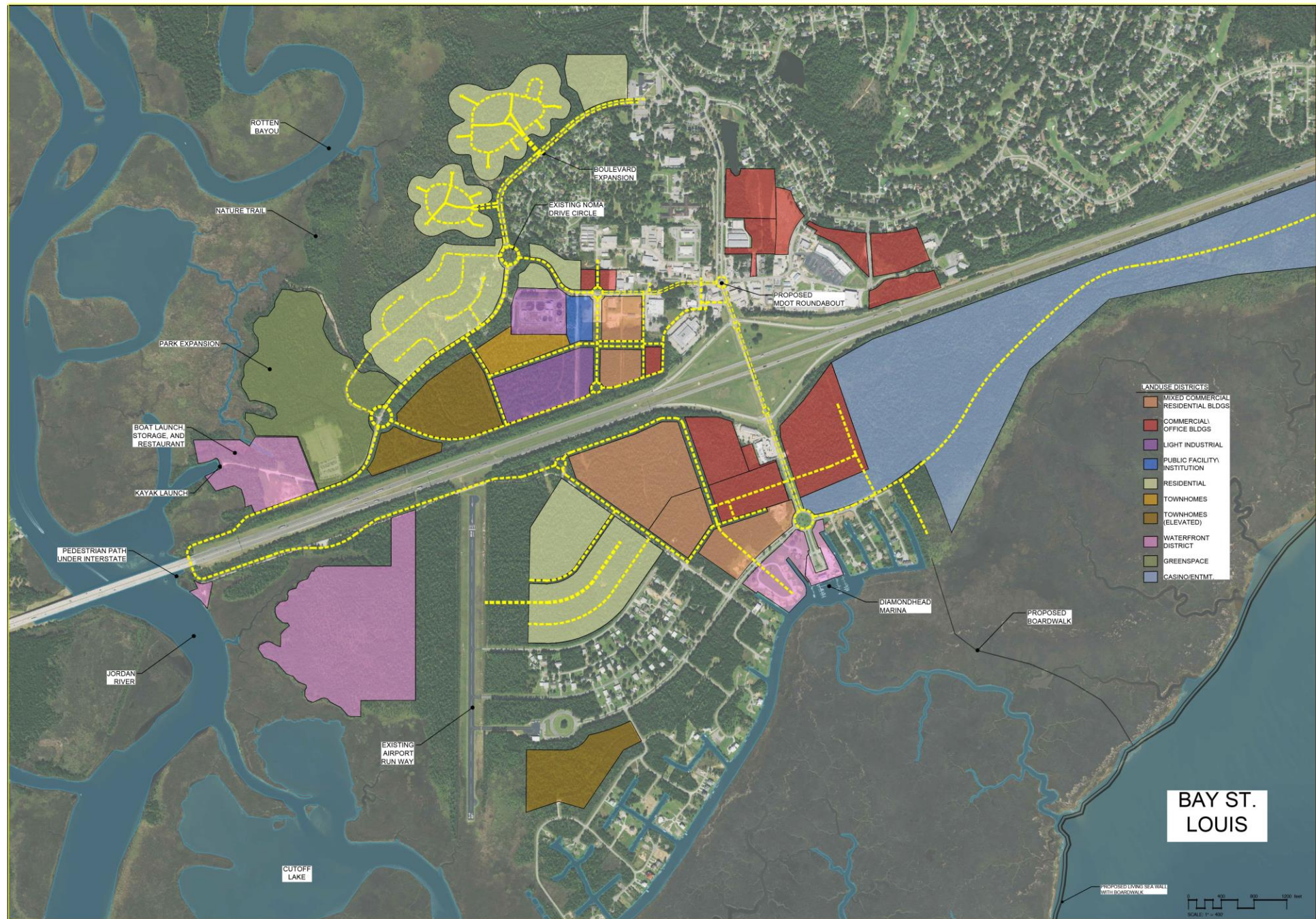
Linfield, Hunter & Junius, Inc.

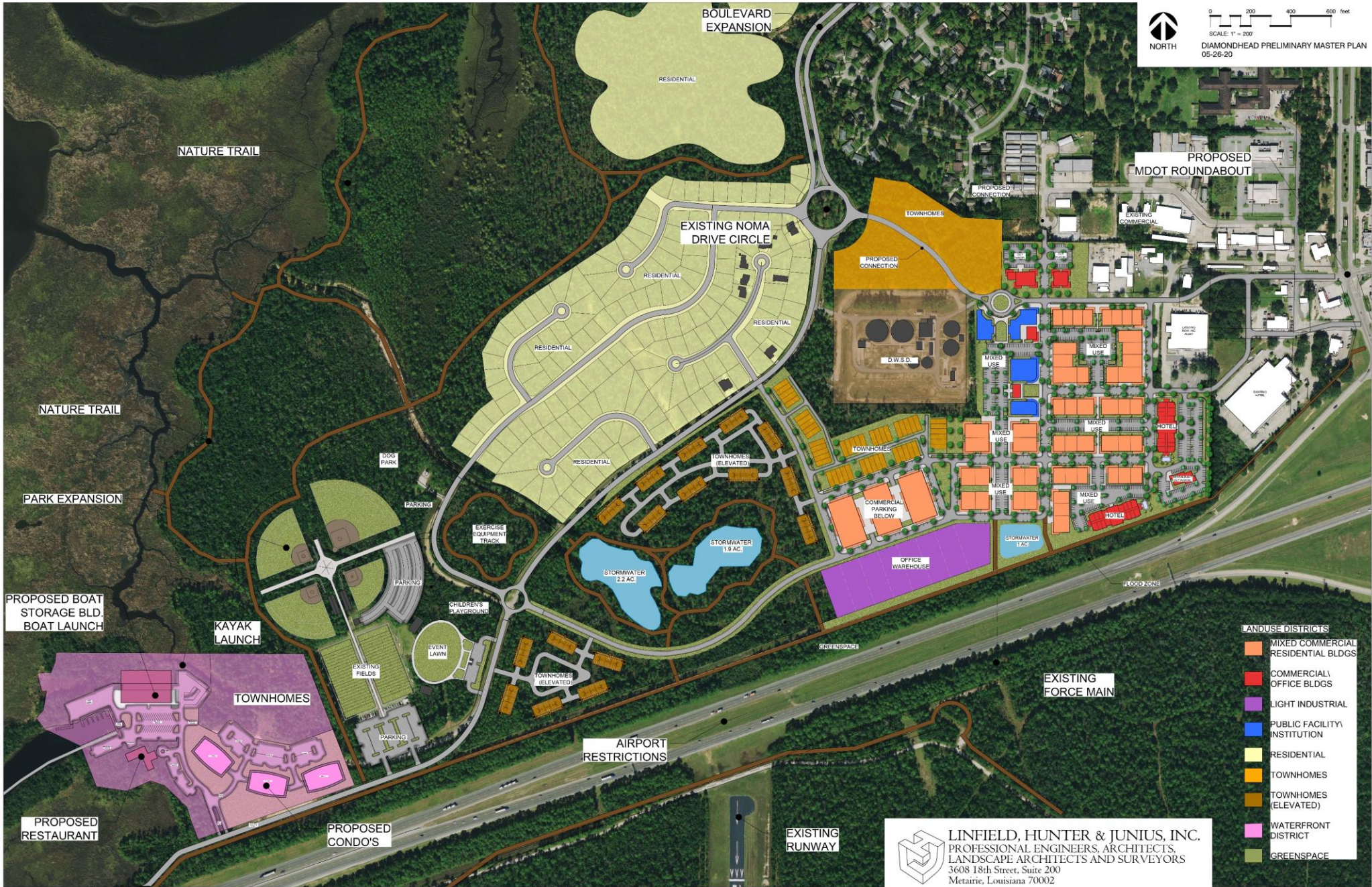
**Professional Engineers, Architects,
Landscape Architects, and Surveyors**



PLAN OVERVIEWS









LIVING CONCEPTS







MIXED-USE CONCEPTS



TOWNHOME CONCEPTS



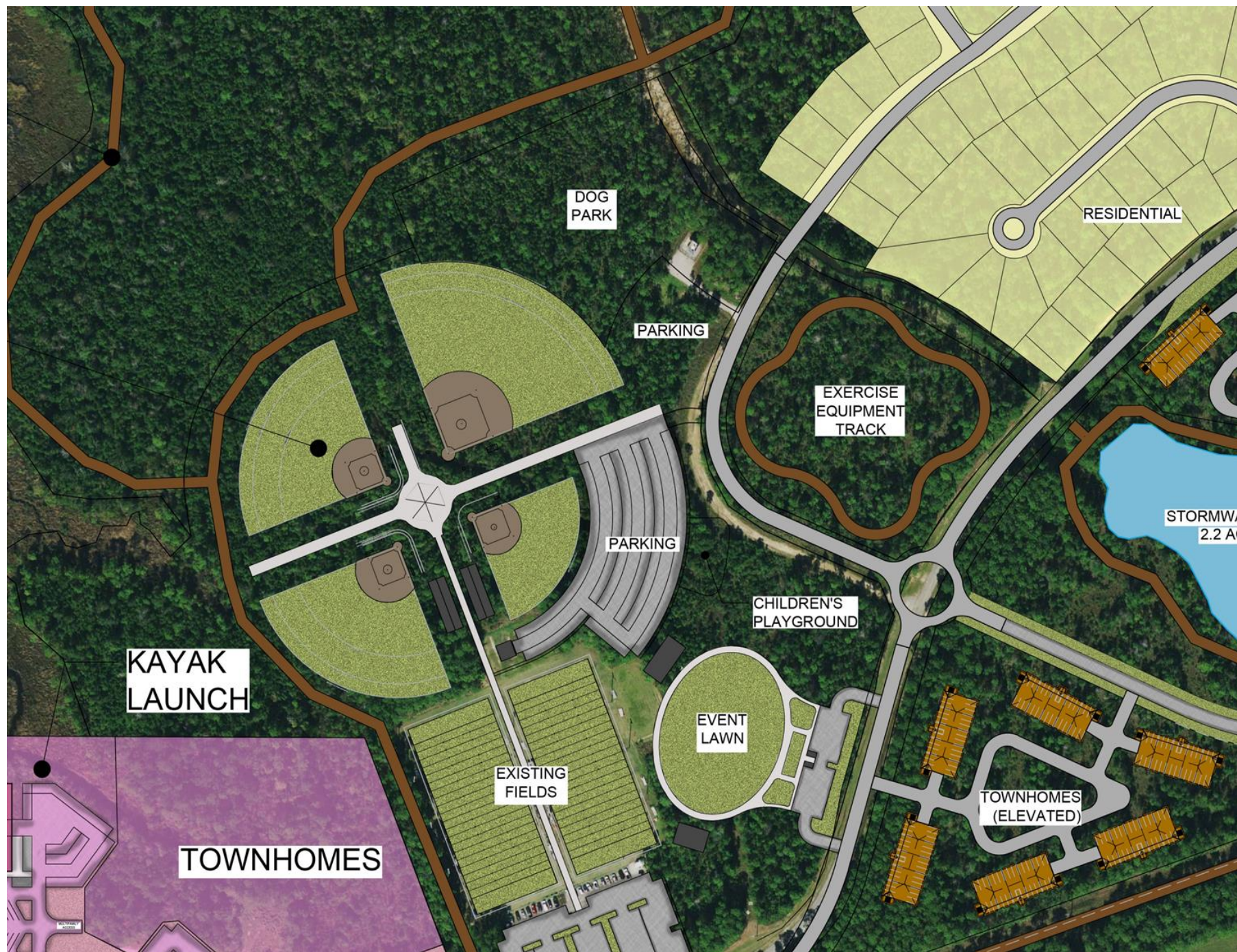
NATURE TRAIL

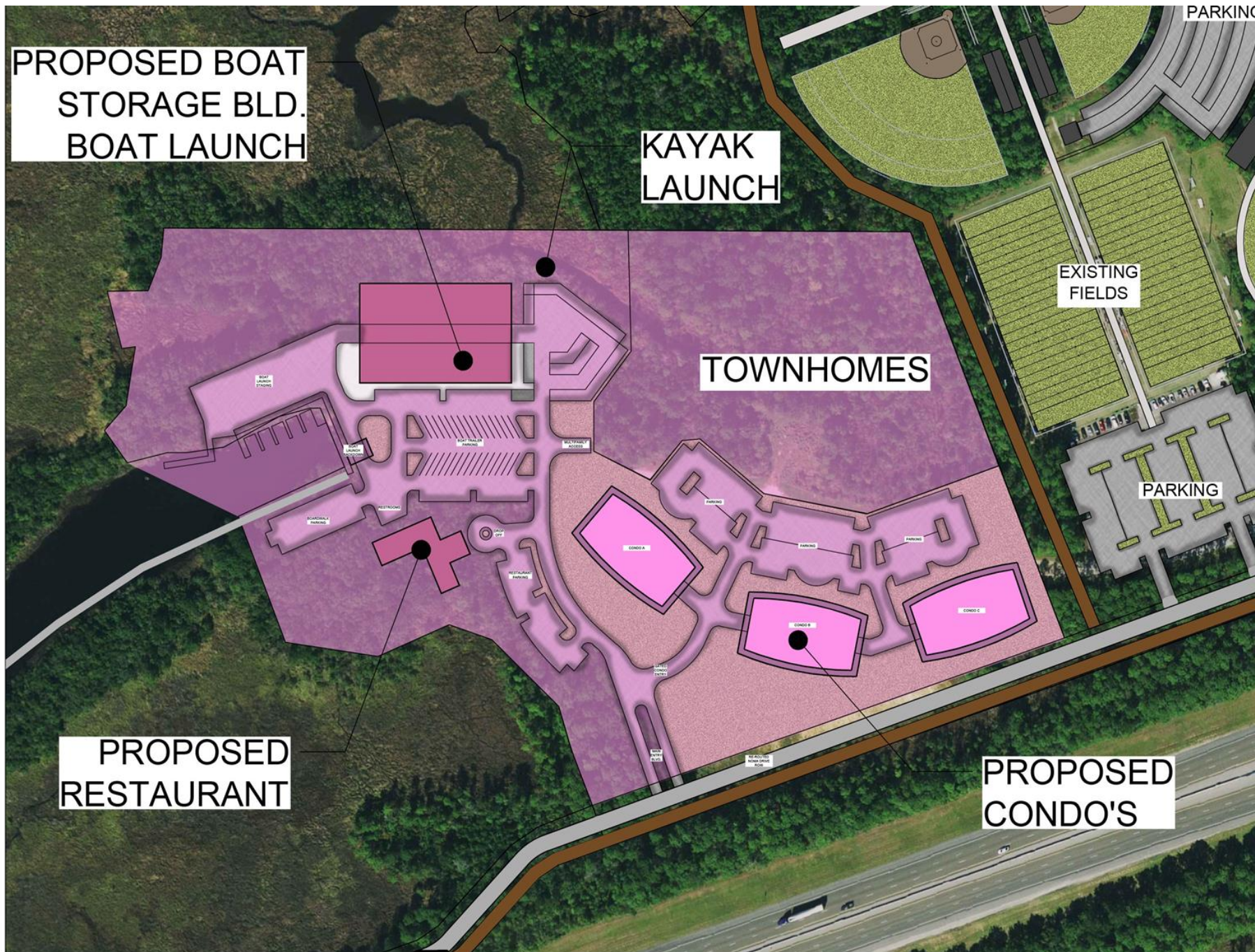


ELEVATED TOWNHOME CONCEPTS



RESIDENTIAL CONCEPTS

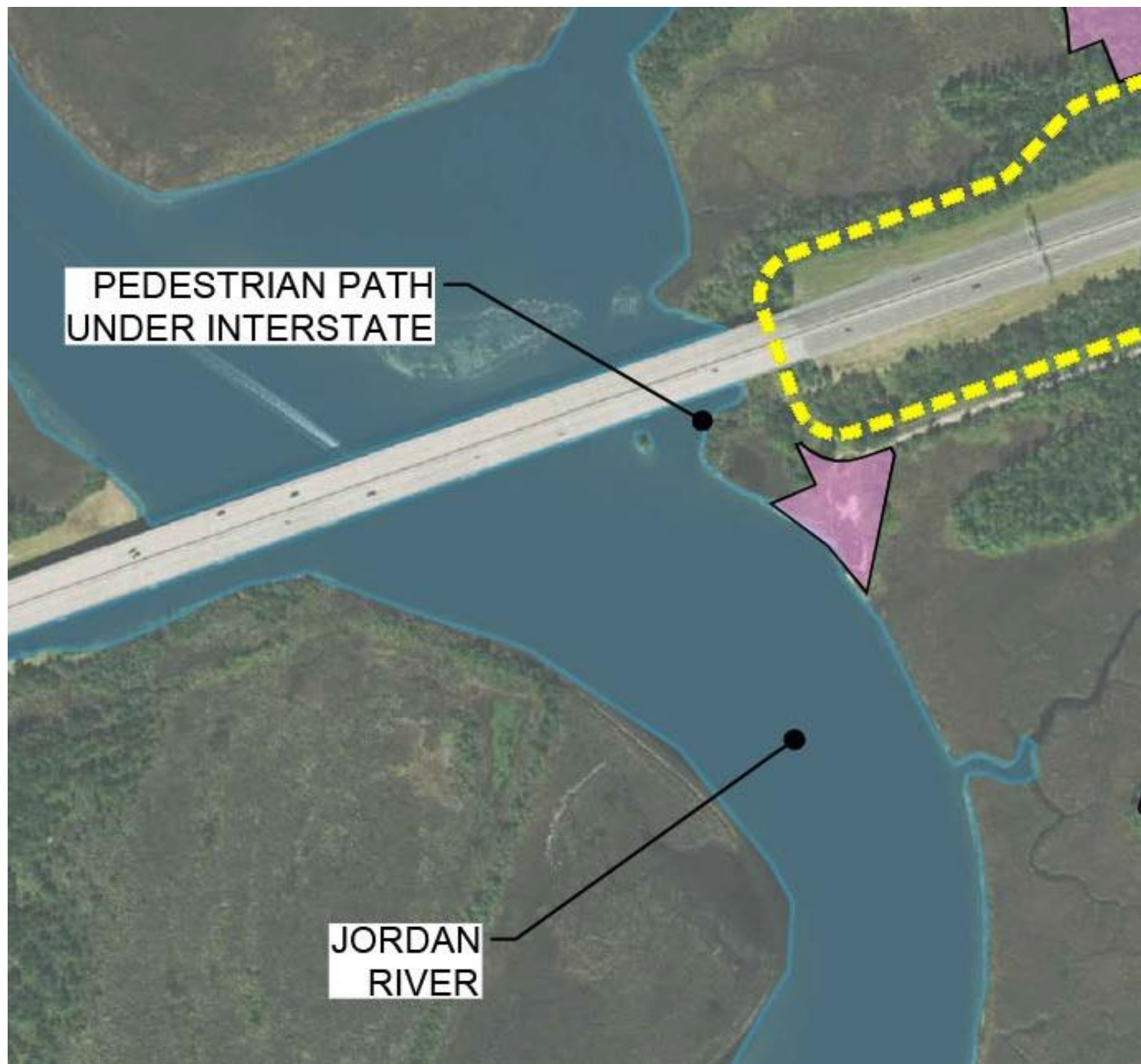






CONDO CONCEPTS


LINFIELD, HUNTER & JUNO
 PROFESSIONAL ENGINEERS, ARCHITECTS AND SURVEYORS
 3608 18th Street, Suite 200
 Metairie, Louisiana 70002

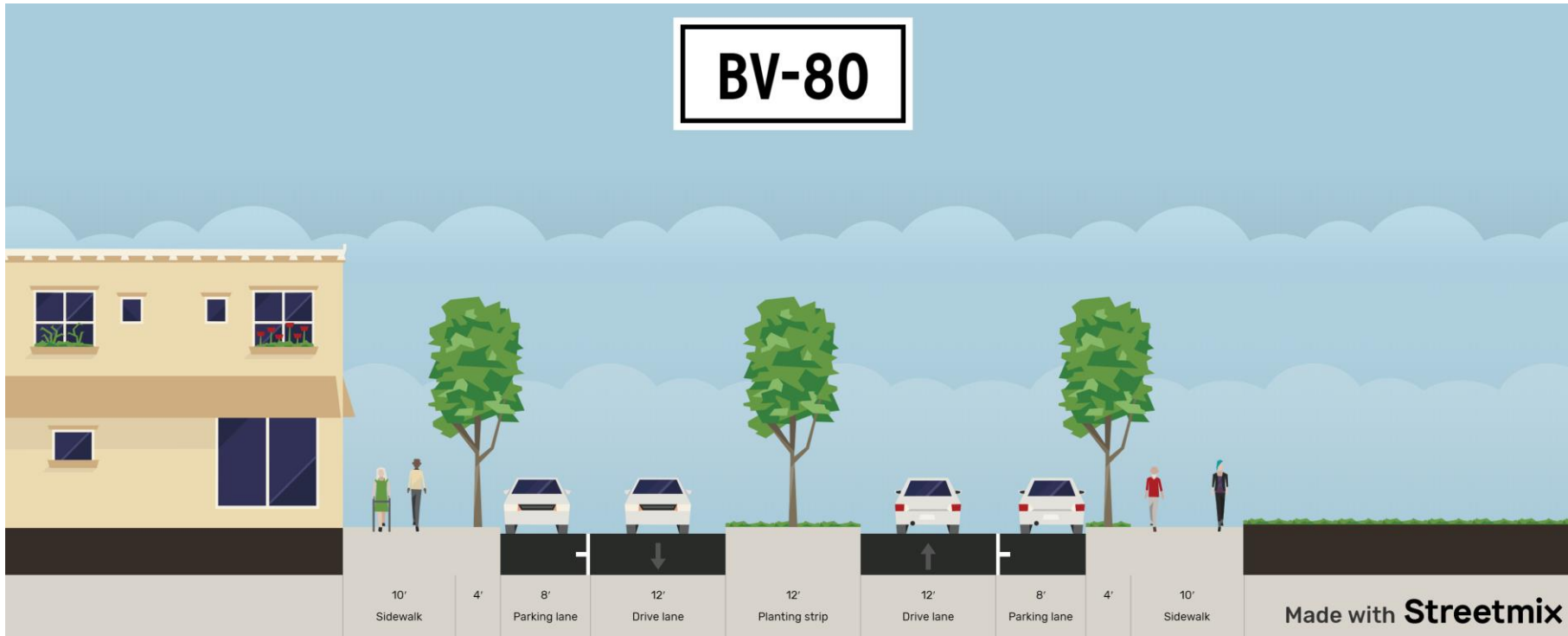




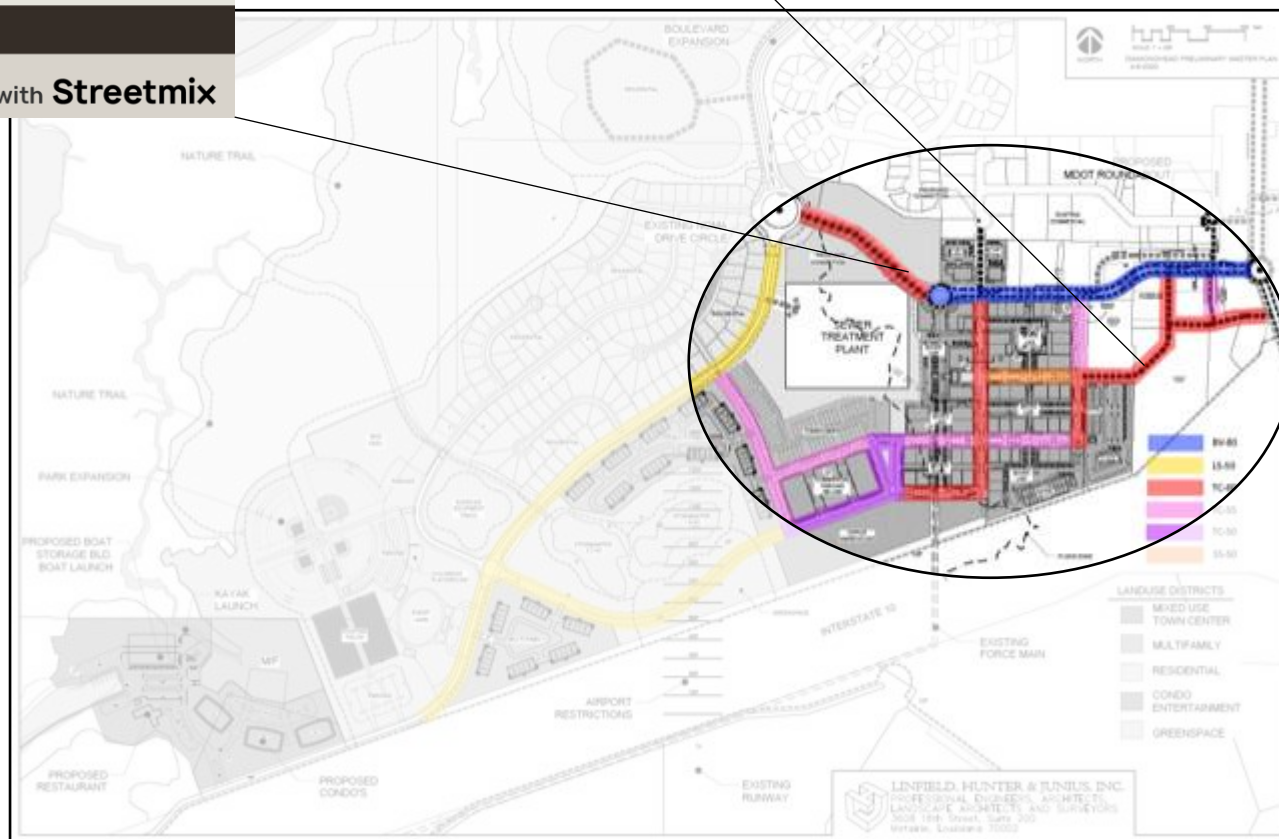
STREET SECTIONS



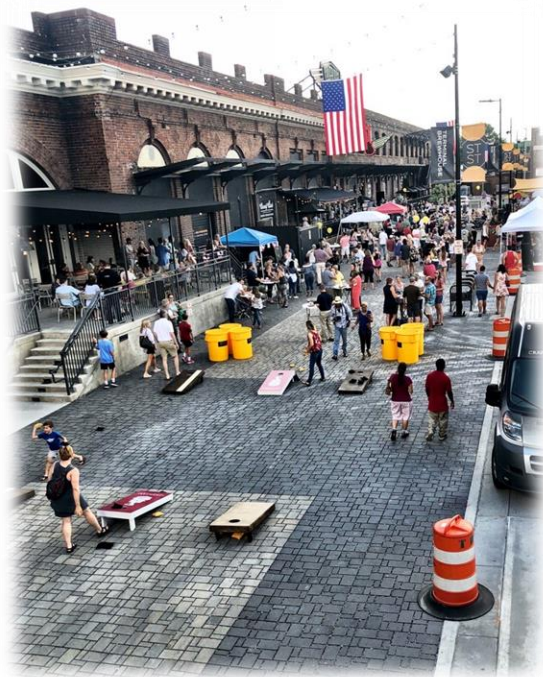
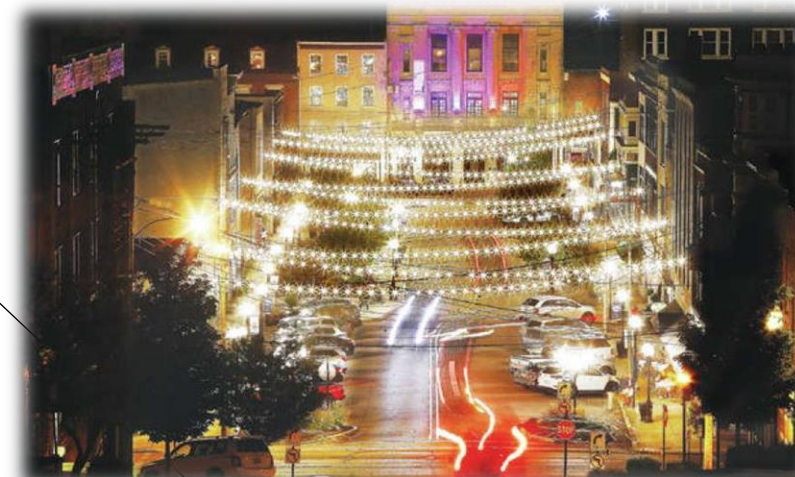
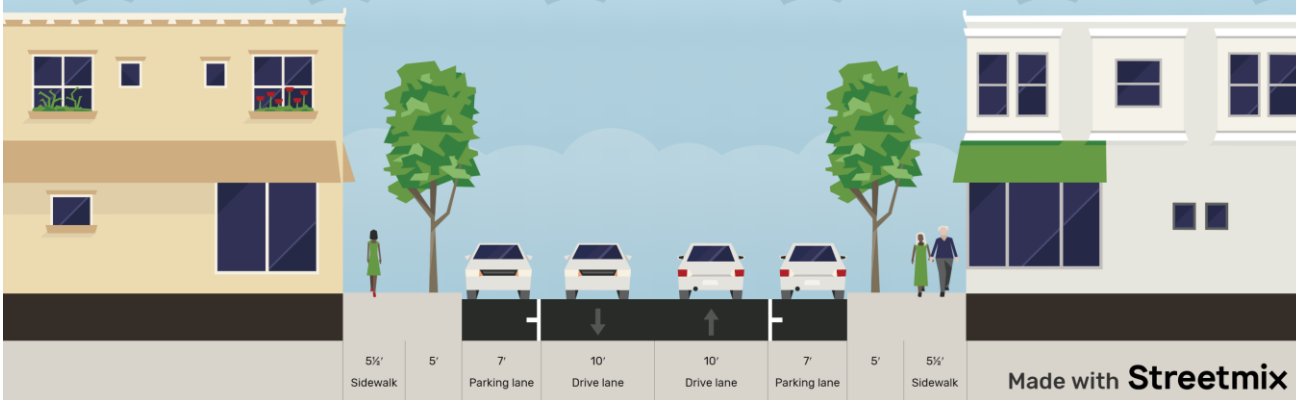
BV-80



TC60

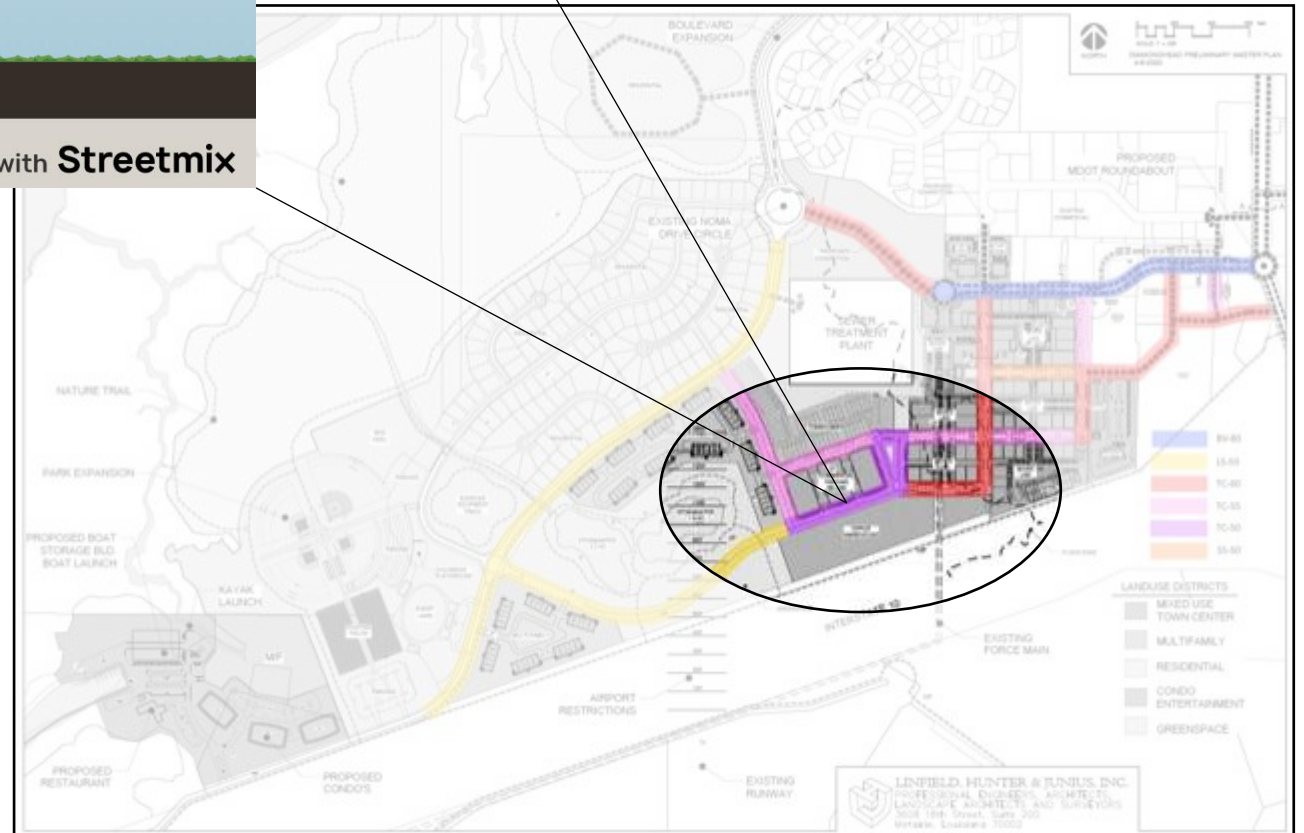


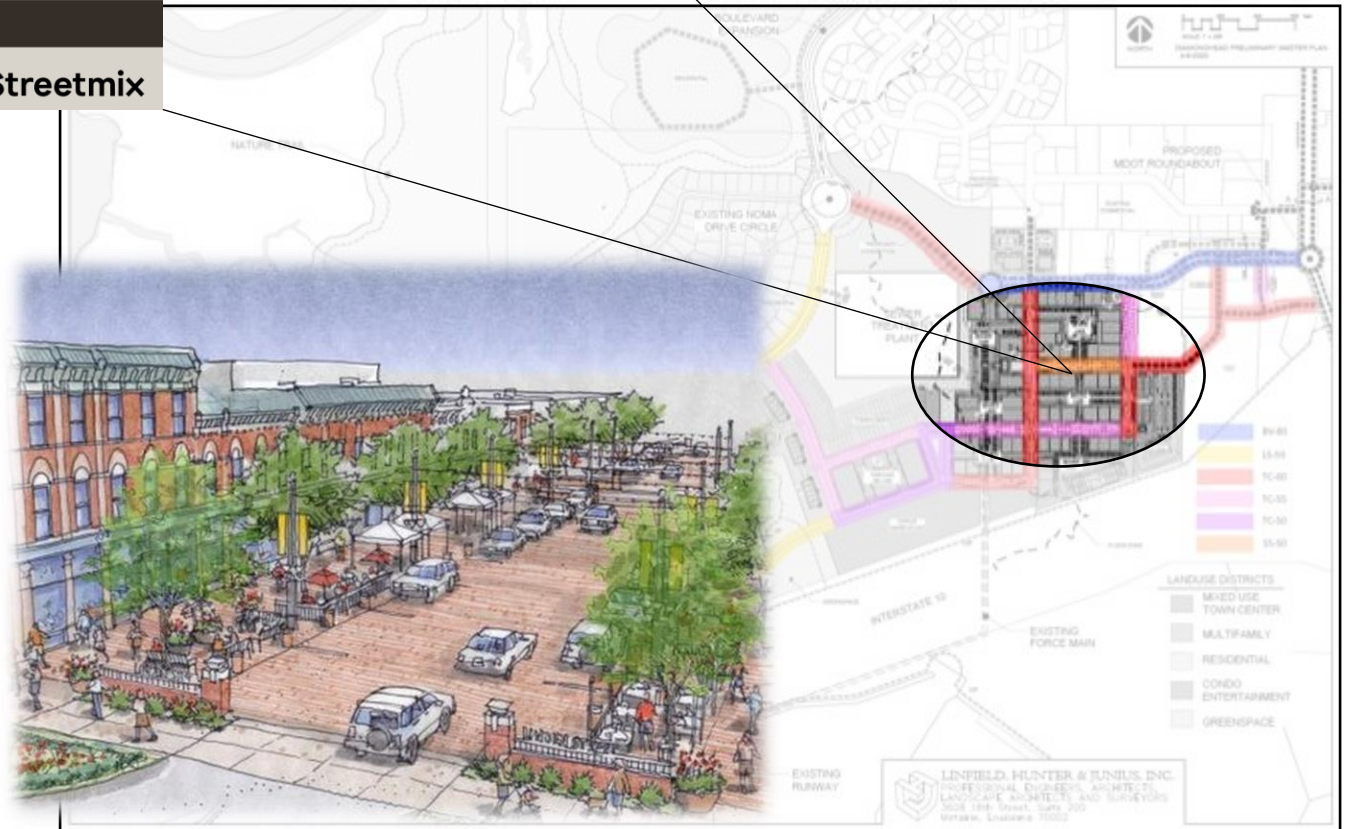
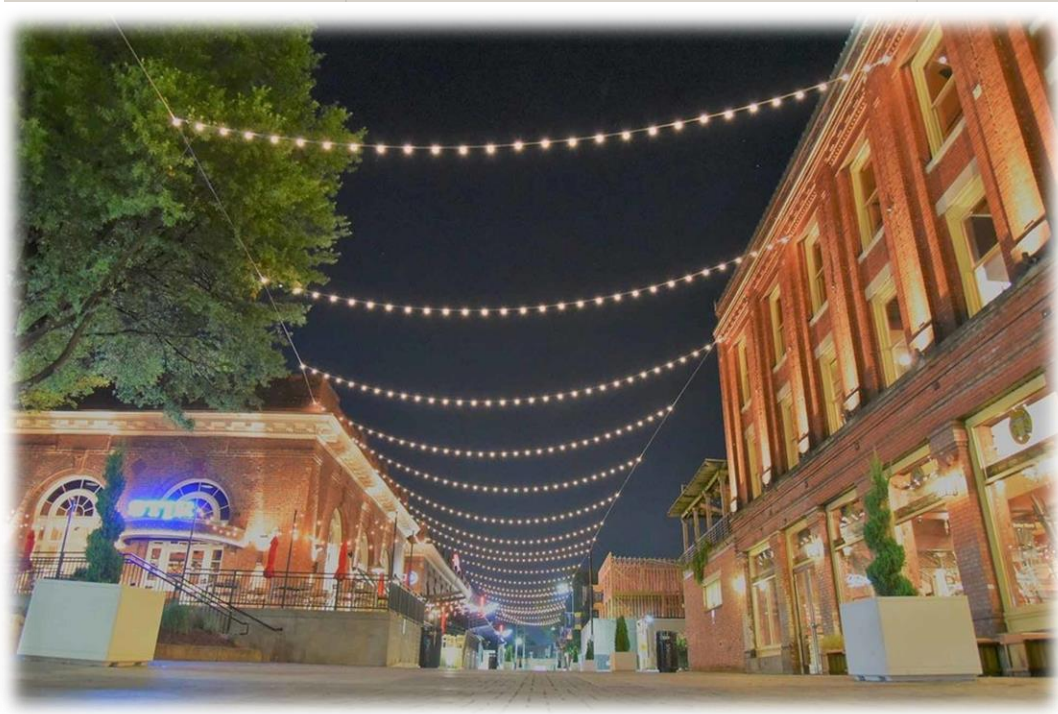
TC55



LS-50







An aerial photograph of a development site with various colored overlays and labels. The site includes residential areas, commercial zones, and industrial areas. Labels include 'EXISTING NOMA DRIVE CIRCLE', 'TOWNHOMES', 'PROPOSED CONNECTION', 'D.W.S.D.', 'MIXED USE', 'HOTEL', 'OFFICE WAREHOUSE', 'STORMWATER 2.2 AC', 'STORMWATER 1.9 AC', 'STORMWATER 1.2 AC', 'FLOOD ZONE', 'EXISTING FORCE MAIN', 'AIRPORT RESTRICTIONS', 'EXISTING COMMERCIAL', 'PROPOSED MDOT ROUNDABOUT', 'PROPOSED CONNECTION', 'RESIDENTIAL', 'TOWNHOMES (ELEVATED)', 'COMMERCIAL PARKING BELOW', 'EXISTING NOMA DRIVE CIRCLE', 'PROPOSED CONNECTION', 'D.W.S.D.', 'MIXED USE', 'HOTEL', 'OFFICE WAREHOUSE', 'STORMWATER 2.2 AC', 'STORMWATER 1.9 AC', 'STORMWATER 1.2 AC', 'FLOOD ZONE', 'EXISTING FORCE MAIN', 'AIRPORT RESTRICTIONS', 'EXISTING COMMERCIAL', 'PROPOSED MDOT ROUNDABOUT', 'PROPOSED CONNECTION', 'RESIDENTIAL', 'TOWNHOMES (ELEVATED)', 'COMMERCIAL PARKING BELOW'.

DIAMONDHEAD MASTERPLAN QUESTIONS?

Presented by:

Linfield, Hunter & Junius, Inc.
Professional Engineers, Architects,
Landscape Architects, and Surveyors