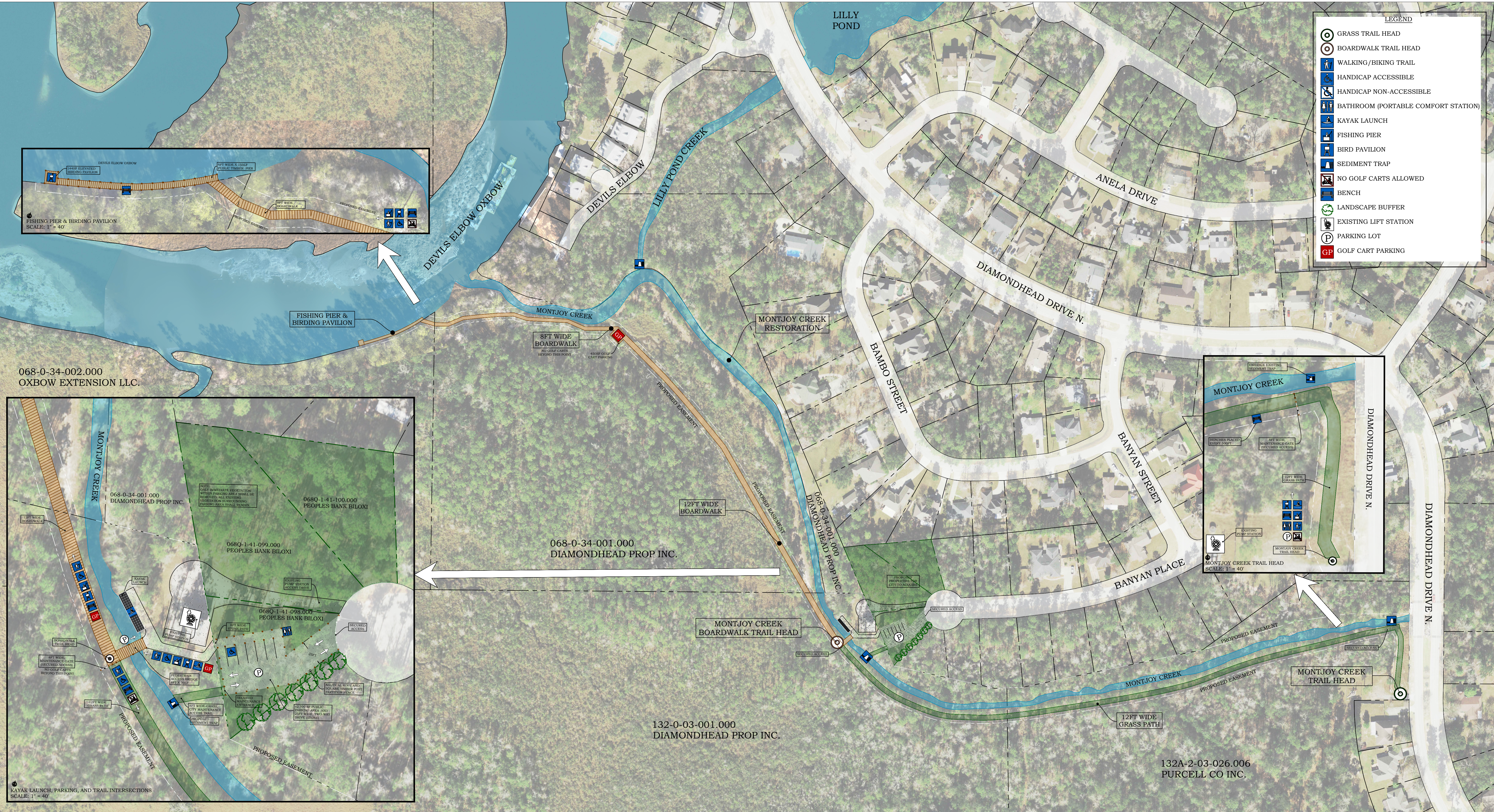


# MONTJOY CREEK NATURE TRAIL (PHASE I)

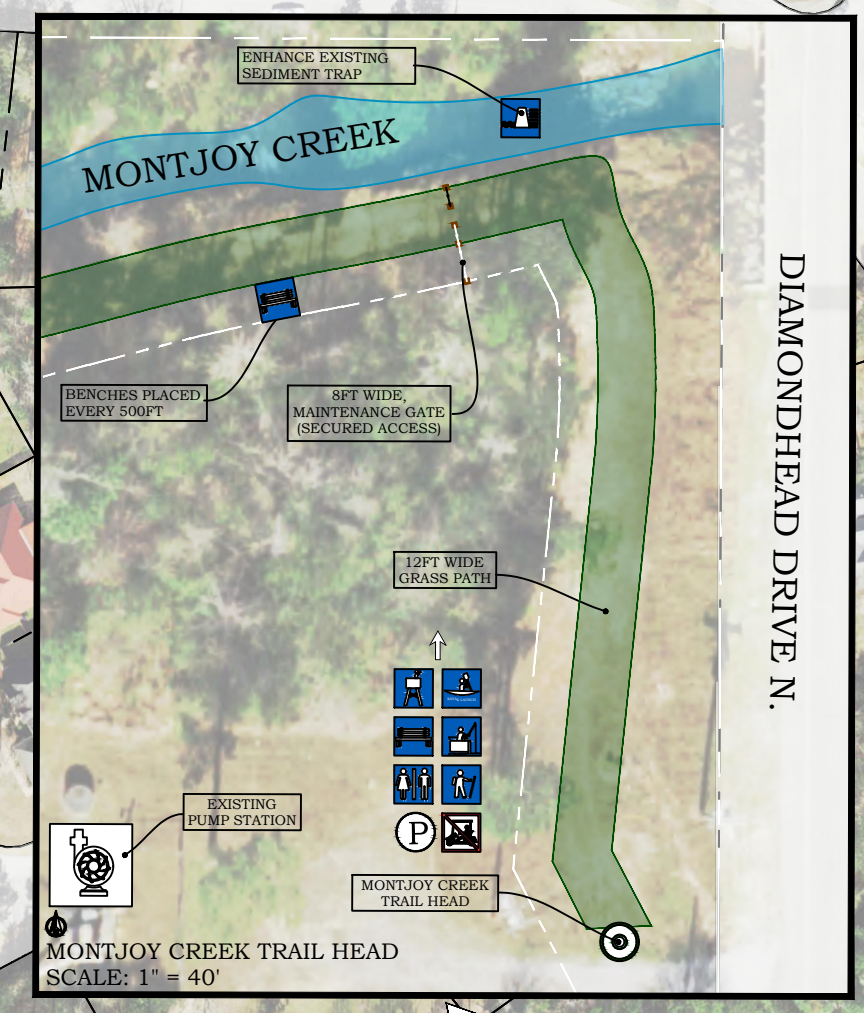
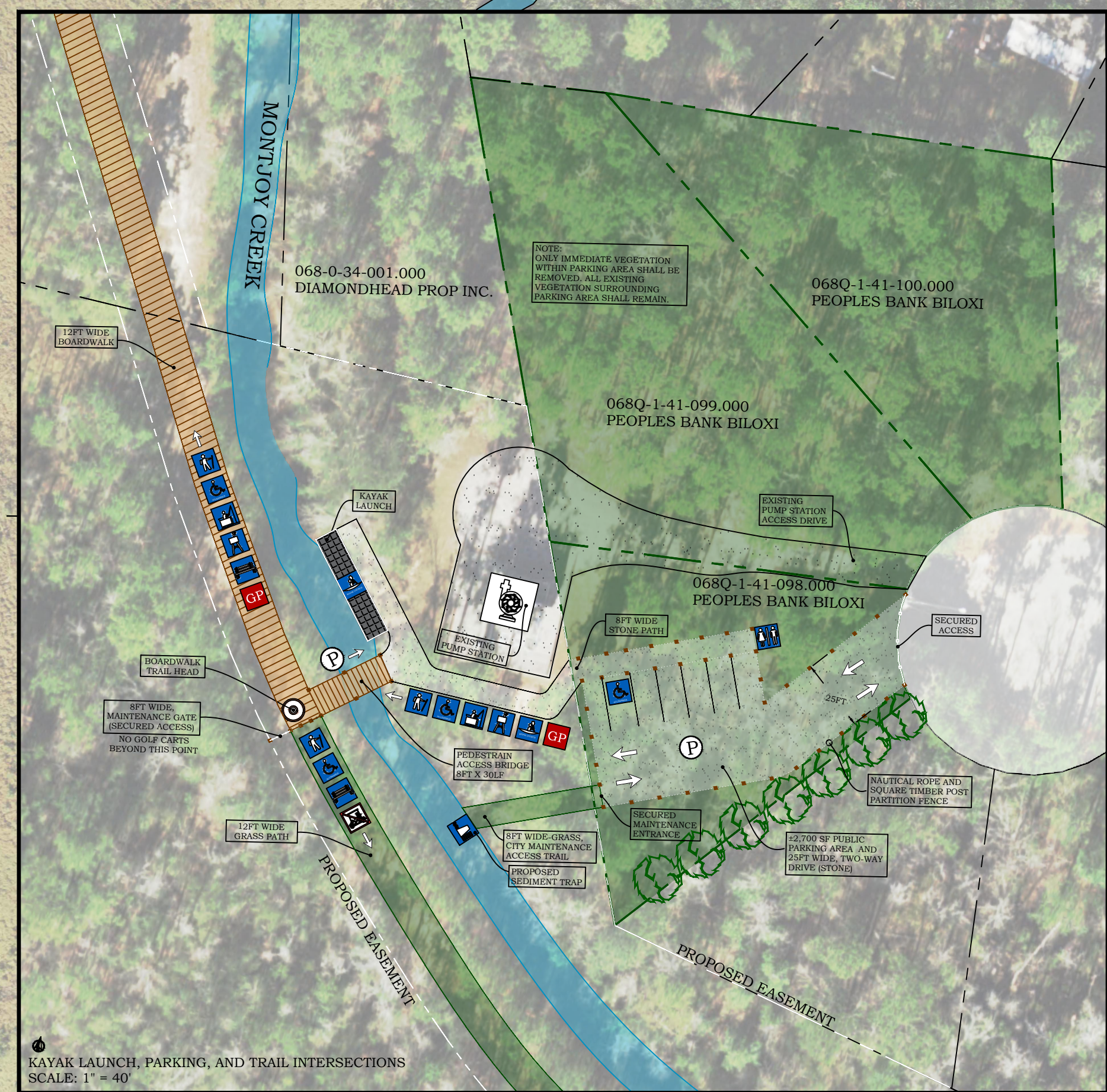
## THE CITY OF DIAMONDHEAD

### HANCOCK COUNTY, MISSISSIPPI

| LEGEND |                                     |
|--------|-------------------------------------|
|        | GRASS TRAIL HEAD                    |
|        | BOARDWALK TRAIL HEAD                |
|        | WALKING/BIKING TRAIL                |
|        | HANDICAP ACCESSIBLE                 |
|        | HANDICAP NON-ACCESSIBLE             |
|        | BATHROOM (PORTABLE COMFORT STATION) |
|        | KAYAK LAUNCH                        |
|        | FISHING PIER                        |
|        | BIRD PAVILION                       |
|        | SEDIMENT TRAP                       |
|        | NO GOLF CARTS ALLOWED               |
|        | BENCH                               |
|        | LANDSCAPE BUFFER                    |
|        | EXISTING LIFT STATION               |
|        | PARKING LOT                         |
|        | GOLF CART PARKING                   |



068-0-34-002.000  
 OXBOW EXTENSION LLC.



- NOTES:
1. PORTABLE COMFORT STATION SHALL BE TRAILERABLE TO ALLOW FOR COMPLETE REMOVAL DURING ANY LARGE STORM OR HURRICANE EVENT.
  2. WILDLIFE PROOF TRASH RECEPTACLES SHALL BE PLACED AT TRAIL HEADS AND WITHIN PARKING AREAS.
  3. BENCHES SHALL BE PLACED ALONG PATHS EVERY 500FT, AT ALL TRAIL HEADS, AND AS INDICATED.
  4. EDUCATIONAL SIGNS AND DISPLAYS SHALL BE PLACED ALONG PATH.
  5. PROPOSED EASEMENT NOT SHOWN FOR ALTERNATE OPTION.

SCALE: 1" = 100'